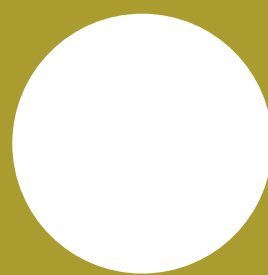
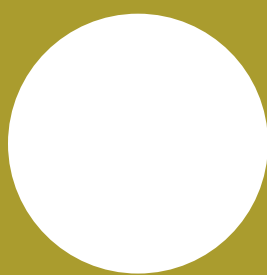
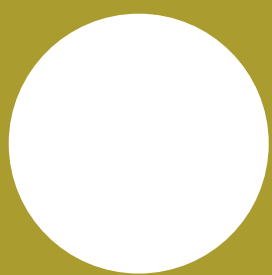


# FABRIC SAMPLES BOOK



2023



CL1 Flame  
Resistance



Resistance  
650°



UV  
resistant



Water  
and stain  
resistant



Easy  
to clean

Material  
composition



COTTON

100% cotton

●\*  
on demand

●



FOR  
NATURE

100% recycled  
post-consumer plastic  
100% biodegradable

●

●

●

●



KVADRAT

90% wool  
10% nylon

●

●

●

●



LYCRA

100% polyester  
FR Trevira Cs

●

●

●

●

●



PLEATED

100% polyester

●

●



PLEATED  
RIBBON

100% polyester

●  
on demand

●  
on demand



VELVET

100% polyester

●

●

●

●



WASHABLE

100% Sunbrella® acrylic

●  
on demand

●

●

●

●



WOOL

70% Wool  
30% Polyamide

●

●

●

●

\* I cotoni nei codici 300/301/302 sono disponibili a magazzino in CL1 con maggiorazione come da listino

\* Cotton fabrics 300/301/302 are available in stock in CL1 with an additional cost as per our price list

Per tutte le tipologie di tessuto è possibile richiedere altri colori. Prezzi e disponibilità verranno stabiliti in base ai quantitativi richiesti e alla tipologia di tessuto.

It is possible to request special colours for our fabrics. Price and availability are established on the basis of the quantities requested and the kind of fabric.

#### Manutenzione e pulizia

##### COTTON / PLEATED / PLEATED RIBBON

Tessuto pulibile con spazzola morbida a mano od elettrica.

##### FOR NATURE / KVADRAT / VELVET / WASHABLE / WOOL

Tessuto pulibile con spazzola morbida a mano od elettrica.

Può essere smacchiato con detergente neutro ed asciugatura con phon tenuto a debita distanza.

##### LYCRA

Tessuto pulibile con spazzola morbida a mano od elettrica.

Può essere smacchiato con detergente neutro ed asciugatura con phon tenuto a debita distanza. Tessuto lavabile a 30° (se sfoderabile).

#### Maintenance and cleaning

##### COTTON / PLEATED / PLEATED RIBBON

To clean cotton fabrics use a soft brush or wire brush.

##### FOR NATURE / KVADRAT / VELVET / WASHABLE / WOOL

To clean these fabrics use a soft brush or wire brush.

Stains can be removed applying a mild-soap and water solution on a sponge. Blow or air dry (keep a safe distance).

##### LYCRA

To clean these fabrics use a soft brush or wire brush. Stains can be removed applying a mild-soap and water solution on a sponge. Blow or air dry (keep a safe distance). Washable fabric at 30° (if removable).

Modo Luce srl

Tutti i diritti riservati. I colori dei prodotti possono leggermente variare da lotto a lotto di produzione. Modo Luce srl si riserva di apportare tutte le modifiche e migliorie ai propri prodotti, in osservanza della normativa CE senza obbligo di preavviso.

Modo Luce srl

All rights reserved. Products colours can be differ from batch to batch. Modoluce reserves the right to make any technical and aesthetical changes to models without prior notice, in compliance with the European Standard.

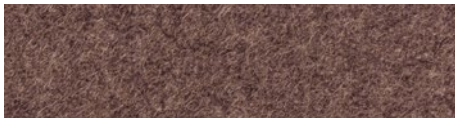


## WOOL

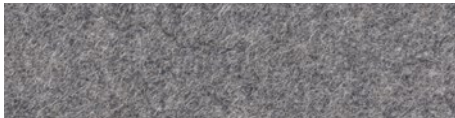
70% wool  
30% polyamide



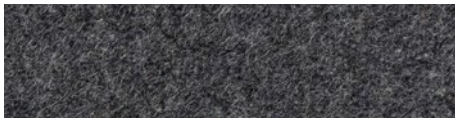
Cod. 650  
Sabbia /  
Sand



Cod. 659  
Castagna /  
Chestnut



Cod. 658  
Grigio /  
Grey



Cod. 656  
Grigio Scuro/  
Dark grey



Cod. 651  
Arancio /  
Orange



Cod. 653  
Giallo senape /  
Mustard yellow



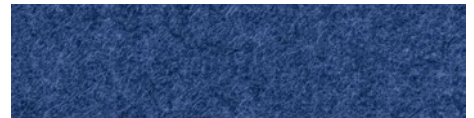
Cod. 652  
Verde /  
Green



Cod. 660  
Verde bosco /  
Dark green



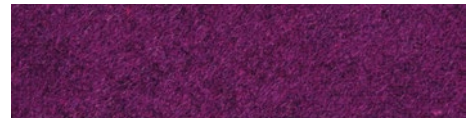
Cod. 661  
Curry /  
Curry



Cod. 662  
Turchese /  
Turquoise



Cod. 655  
Blu avio /  
Avio blue



Cod. 654  
Viola /  
Purple

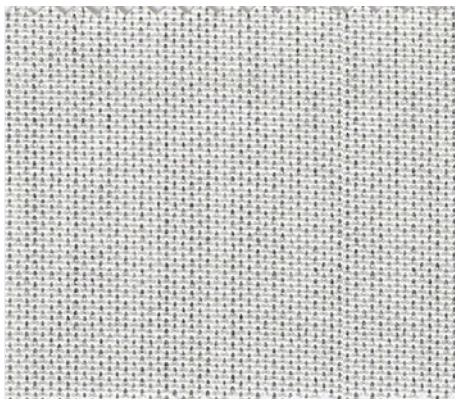


Cod. 657  
Rosso  
cardinale /  
Cardinal red



## WASHABLE

Indoor/outdoor  
100% Sunbrella® acrylic



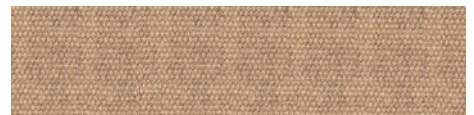
Cod. 618  
Marble /  
Marble



Cod. 616  
Naturale /  
Natural



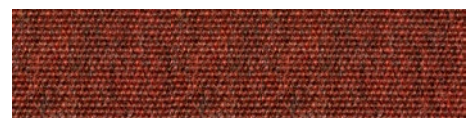
Cod. 613  
Flanelle /  
Flanelle



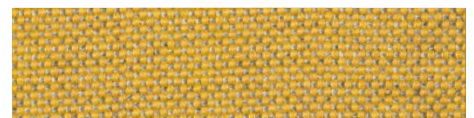
Cod. 617  
Talpa /  
Moleskin



Cod. 619  
Salvia /  
Sage



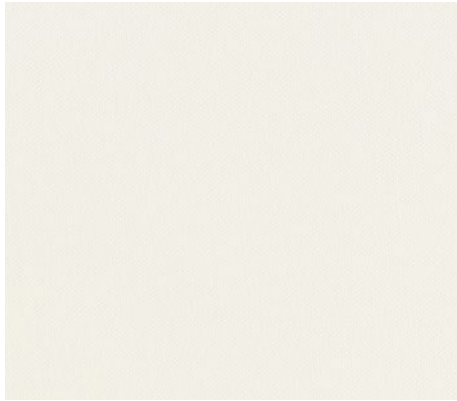
Cod. 620  
Autunno /  
Autumn



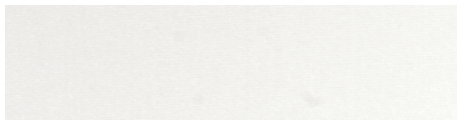
Cod. 621  
Ambra /  
Amber



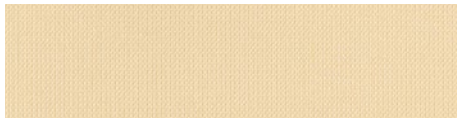
**COTTON**  
100% cotton



Cod. 300  
Avorio /  
Ivory



Cod. 301  
Bianco /  
White



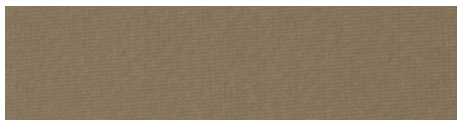
Cod. 302  
Sabbia /  
Sand



Cod. 323  
Salvia /  
Sage



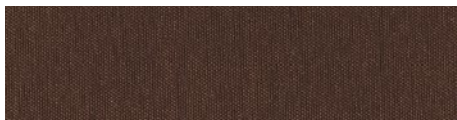
Cod. 317  
Tortora /  
Dove colour



Cod. 324  
Spago /  
Ecreu



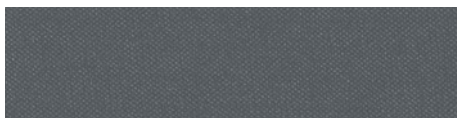
Cod. 305  
Aragosta /  
Lobate pink



Cod. 314  
Marrone /  
Brown



Cod. 312  
Grigio chiaro /  
Light grey



Cod. 310  
Antracite /  
Anthracite



Cod. 313  
Nero /  
Black

Cod. 315  
Arancio /  
Orange



Cod. 318  
Muschio /  
Moss



Cod. 319  
Ottanio /  
Teal



Cod. 327  
Provenza /  
Lavender



Cod. 320  
Malva /  
Mallow



Cod. 321  
Pervinca /  
Periwinkle



Cod. 326  
Blu navy /  
Navy blue



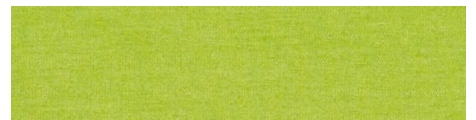
Cod. 303  
Giallo oro /  
Golden  
yellow



Cod. 306  
Rosso /  
Red

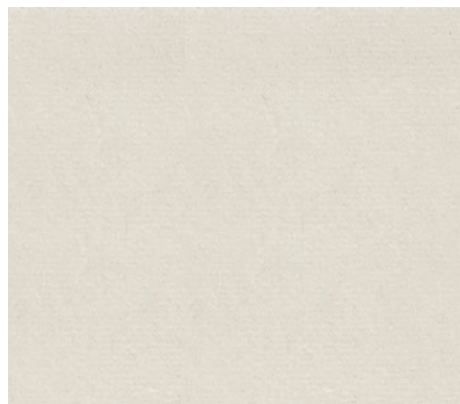


Cod. 316  
Verde /  
Green





**VELVET**  
100% polyester



Cod. 455  
Crema /  
Cream



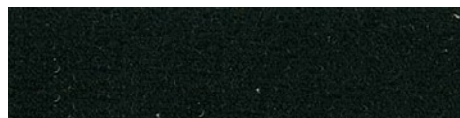
Cod. 456  
Tortora /  
Dove



Cod. 457  
Senape /  
Mustard



Cod. 458  
Fiordaliso /  
Cornflower



Cod. 459  
Sherwood /  
Sherwood



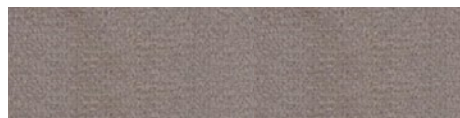
Cod. 460  
Ruggine /  
Rust



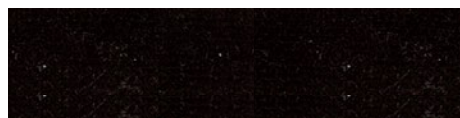
Cod. 461  
Rosso porpora /  
Purple red



Cod. 462  
Blu oceano /  
Ocean blu



Cod. 463  
Grigio chiaro /  
Light grey



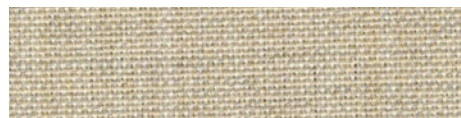
Cod. 464  
Antracite /  
Anthracite



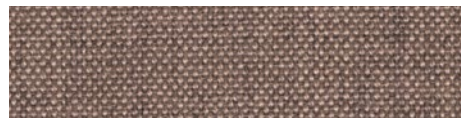
**KVADRAT**  
90% wool  
10% nylon



Cod. 850  
Grigio /  
Grey



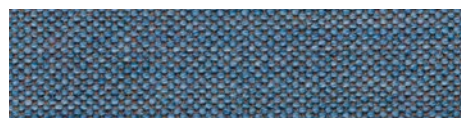
Cod. 853  
Ecrù /  
Ecrù



Cod. 859  
Nocciola /  
Hazel



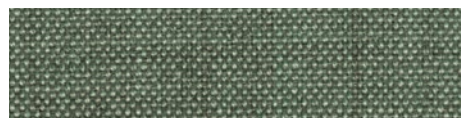
Cod. 851  
Giallo /  
Yellow



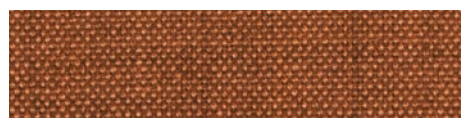
Cod. 855  
Indaco /  
Indigo



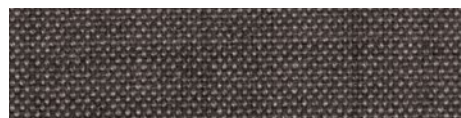
Cod. 854  
Curcuma /  
Curcuma



Cod. 858  
Verde /  
Green



Cod. 857  
Terra di Siena /  
Terra di Siena



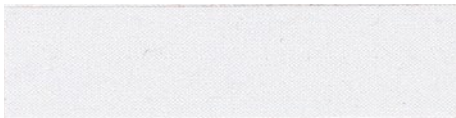
Cod. 856  
Grigio scuro /  
Dark grey



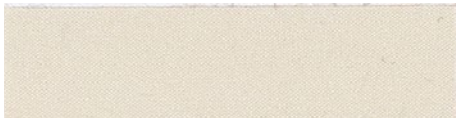
**PLEATED**  
100% polyester



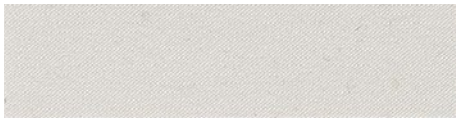
Cod. 501  
Beige /  
Beige



Cod. 500  
Bianco /  
White



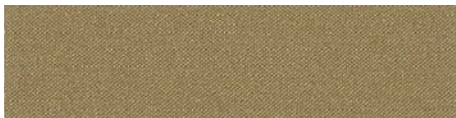
Cod. 513  
Avorio /  
Ivory



Cod. 509  
Grigio chiaro /  
Light grey



Cod. 514  
Nocciola /  
Hazel



Cod. 515  
Militare /  
Military

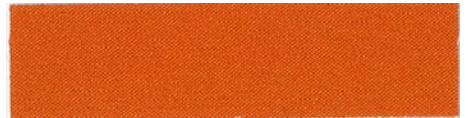


Cod. 505  
Marrone /  
Brown

Cod. 516  
Marrone scuro /  
Dark brown



Cod. 517  
Cotto rosso /  
Red brick



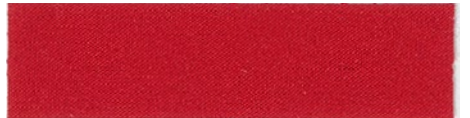
Cod. 511  
Arancio /  
Orange



Cod. 504  
Rosso fuoco /  
Flame red



Cod. 512  
Rosso scuro /  
Dark red



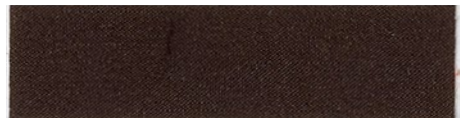
Cod. 520  
Bluette /  
Electric blue



Cod. 519  
Grigio scuro /  
Dark grey



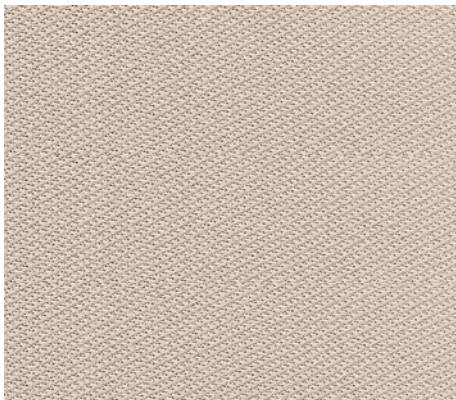
Cod. 510  
Antracite /  
Anthracite



Cod. 502  
Nero /  
Black



**LYCRA**  
100% Polyester  
FR Trevira Cs



Cod. 263  
Sabbia /  
Sand

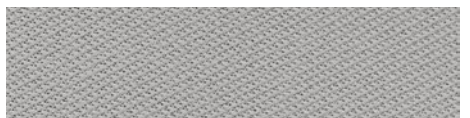


Cod. 250  
Bianco /  
White

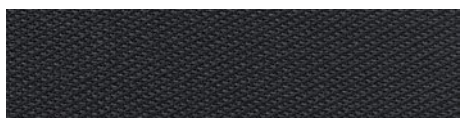
Cod. 264  
Giallo /  
Yellow



Cod. 252  
Grigio /  
Grey



Cod. 262  
Piombo /  
Gunmetal  
grey





**PLEATED RIBBON**  
100% polyester



Cod. 700  
Avorio /  
Ivory



Cod. 704  
Spago /  
Ecrù



Cod. 701  
Cuoio /  
Leather



Cod. 705  
Mimosa /  
Yellow



Cod. 703  
Ardesia /  
Slate grey



Cod. 709  
Verde bosco /  
Dark green



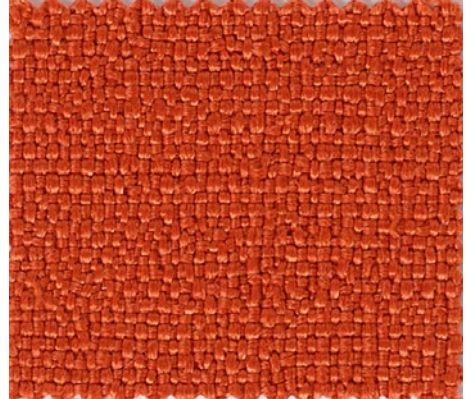
Cod. 708  
Ghisa /  
Anthracite



**FOR NATURE**

100% recycled post-consumer plastic  
100% biodegradable by imNativ®

Cod. 752  
Ruggine /  
Rust



Cod. 750  
Avorio /  
Ivory



Cod. 751  
Salvia /  
Sage



Cod. 753  
Carta da  
zucchero/  
Sugar paper



Cod. 754  
Grigio scuro /  
Dark grey



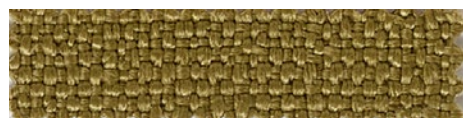
Cod. 755  
Nocciola /  
Hazel



Cod. 756  
Ocra /  
Ocher



Cod. 757  
Verde oliva /  
Olive green



**MODO LUCE SRL**  
via Venezia, 13  
31028 Vazzola (TV) Italy

T +39 0438 488076  
T +39 0438 488110

info@modoluce.com  
modoluce.com

